




QuickFit

For certain hearing aid series, QuickFit is available. QuickFit takes you through the fitting process quickly and easily by estimating all Sensogram and feedback test data. You can also obtain these measurements should you want to increase the precision of the fitting. In order to use QuickFit, you must first make it available by choosing your preferred fitting method from the *Setup* dialog box.

Before the fitting

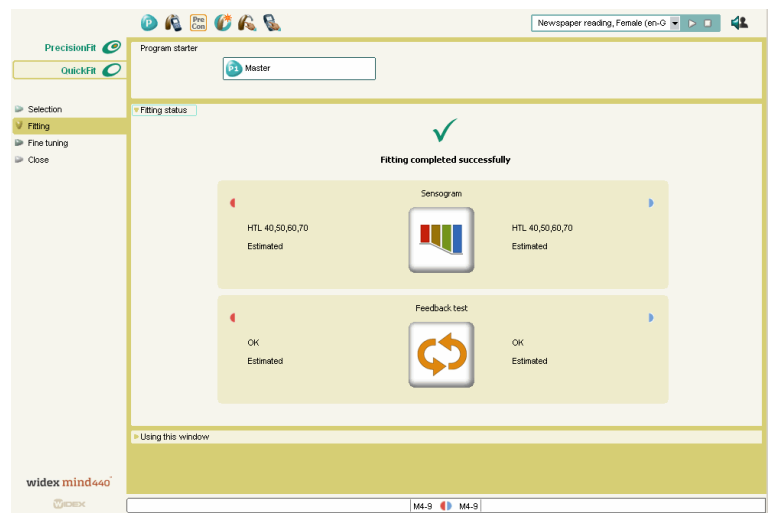
Before beginning the fitting process, you should consider your client's personal situation and experience with hearing aids. See the quick guide *Before the fitting* for information about the steps to take.

The QuickFit procedure

1. Select the client in your database, and open Compass. Compass opens in the *Selection* window.
2. Select the *QuickFit* button in the vertical navigation bar. 
3. Connect the hearing aids to the programming interface, and select the *Detect hearing aids* icon. Compass shows the *Detected hearing aids* window with information about the detected hearing aids.
4. Make sure that the *Fitting status* radio button is selected, and select *OK* to continue. Compass will estimate the fitting data and displays the *Fitting* window with information about the QuickFit fitting.

The top of the Fitting status window shows you if the fitting was completed successfully. If there are comments, you can click the information button to get advice on what to do.

You now have a basic fitting, and you can close Compass and save the fitting in your database. You can also make your fitting more precise by performing a Sensogram and feedback test.



Obtaining measurements

From the *Fitting* window you have access to the *Sensogram* and the *Feedback test* windows that let you improve the fitting by obtaining measurements specific for your client. After a basic fitting, the information fields next to the *Sensogram* and *Feedback test* buttons all indicate *Estimated* data. To perform the actual tests, do the following:

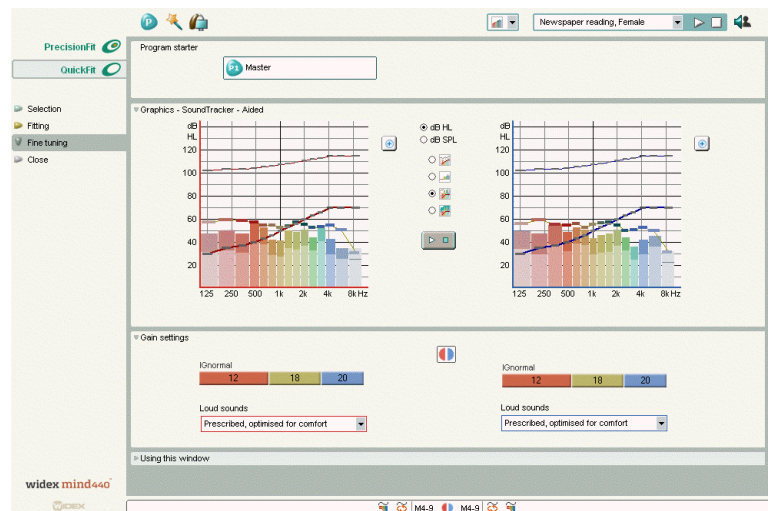


1. Select the *Sensogram* button to open the *Sensogram* window. This window contains Sensogram data for both hearing aids.
2. Select the first frequency and present the tone to your client, following the general guidelines for obtaining Sensogram – and audiogram - values.
3. Measure the Sensogram at all frequencies, and select *OK* when you have finished. The *Fitting* window now shows that you have measured Sensogram values.
4. Select the *Feedback test* button to open the *Feedback test* window.
5. Make sure that the noise level in the room is not too loud. All columns in the *Noise level* graphics should remain green.
6. Select *Start test* to perform the feedback test. You can see the progress of the test as it runs. You can use the *Stop test* button in case you need to stop a running test.
7. When the test has finished, the result appears on the screen. The result should be OK (a green check mark). If the result is not OK, a red cross appears, and a button lets you open a dialog box with information about how you can improve the fitting.
8. Select *OK* when you have finished working with the *Feedback test* window.

QuickFit fine tuning

Note: If you connect hearing aids that have been fit using the QuickFit feature, Compass opens in the *Fine tuning* window when you detect the hearing aids.

1. Select your client in the database, and open Compass.
2. Connect the hearing aids, and select *Detect hearing aids*. Compass shows the *Online communication* window.
3. Make sure that *Fine tuning* is selected. You may also have to check that the earhook/earmold option is correct (this only applies to some hearing aid models). Then select *OK* to continue.



4. Compass opens the *Fine tuning* window. Make any adjustments that you need. You have access to the following handles in this window:
 - **IGNormal**. Adjust the **IGNormal** values in three different bands.
 - **Loud sounds**. Change the sound level for loud sounds by selecting an item from the drop-down list.

If you have defined several programs in the hearing aids, you can change between the programs by means of the *Program starter* panel at the top of the *Fine tuning* window. You cannot, however, change the settings for the individual programs. Any adjustment under *Fine tuning* applies to all programs in the hearing aids. The only exception to this is the *Acclimatization* program in which you can change the acclimatization stage.



QuickFit tools

You have access to a number of tools from the Toptool bar during a QuickFit fitting. Except where noted, the tools are accessible under both Fitting and Fine tuning.

Program manager



Use this tool to add other programs in the hearing aids in addition to the *Master* program. When you select extra programs in a binaural fitting, they are added to both hearing aids. You cannot fine tune the programs individually. Any adjustments made to the *Master* program affect all programs in the hearing aids.

RC matching



This tool takes you through a wizard that matches the hearing aids to a remote control.

HA handling



Use this tool to demonstrate to your client how to work with the hearing aids. When the hearing aids are connected, they respond to the actions you take in the *HA handling* window.

RC handling



Use it to demonstrate to your client how to operate the hearing aids and the matched remote control. When the hearing aids are connected, they respond to the actions you take in the window.

Preconditions



You can open *Preconditions* from the *Fitting* window. This tool lets you change the vent diameter, shows the earhook/earmold option for the hearing aids, and lets you select the tip and tubing used.

Note that the settings under *Preconditions* may influence the fitting. If you change the settings in this window, you may have to perform a new fitting.

New fitting



You can open *New fitting* from the *Fitting* window to delete the existing fitting in the hearing aids and perform a new one.

Solution guide



You can open the *Solution guide* from the *Fine tuning* window. Use this tool if your client has a specific problem. Compass can give you a number of possible solutions to a problem and change the relevant settings for you before you close the tool.

Recalculate



You can open the *Recalculate* tool from the *Fine tuning* window to set the fine tuning settings to the default values.